



Parish Councillor Network Meeting

Monday 28th November 2022

Supporting communities during cost-of-living crisis

Agenda

- ❑ Welcome & Introductions
- ❑ Setting up Warm Spaces – 2 examples:
 - ❖ Cllr Jane Wood, Bugbrooke
 - ❖ Guy Ravine, Parish Clerk Nether Heyford
- ❑ Other cost-of-living support:
 - ❖ West Northants Council
 - ❖ North Northants Council
 - ❖ Other organisations
- ❑ Latest Community Transport directory – Jenni Hedges
- ❑ Action for Happiness & Happiness Cafes – Jo Browning, Claire Yow
- ❑ APPG Rural Health and Care Inquiry – the impact on rural areas – Elaine O’Leary
- ❑ Future meetings and topics



Setting up Warm Spaces

Cllr Jane Wood, Bugbrooke

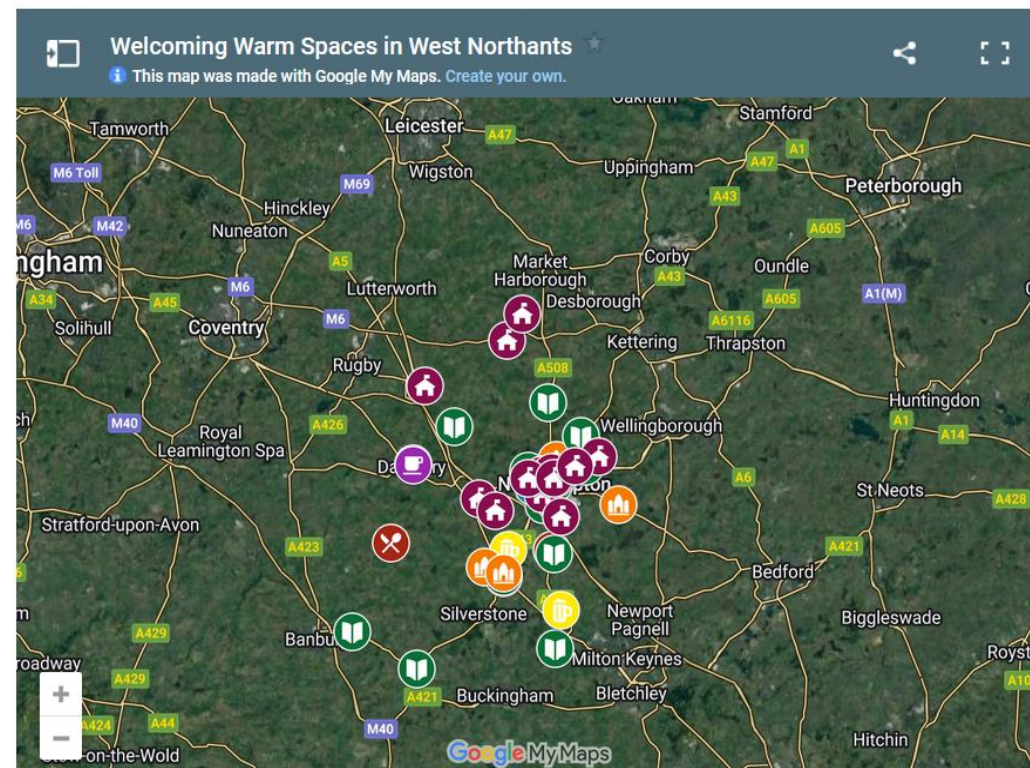
Guy Ravine, Parish Clerk Nether Heyford

Other Cost of Living support

West Northants Council

- ❑ Financial help for low wage workers, households with children, and those most needing help towards rent, council tax, household bills including gas and electricity, childcare costs and important daily essentials. Funded by the third tranche of the Household Support Fund.
- ❑ West Northamptonshire Council Online Cost of Living Support Hub: <https://www.westnorthants.gov.uk/cost-living-support>
- ❑ Cost-of-Living Support Line 0300 126 7000
- ❑ [Network and directory](#) of 67 Warm Spaces across West Northants
- ❑ As part of West Northants [Anti Poverty Strategy](#) looking for more warm spaces. Can register [here](#).
- ❑ [Directory of food banks and larders](#) across West Northants

Map of warm spaces in West Northamptonshire



Welcoming Warm Spaces - Register of Interest

The survey will take approximately 7 minutes to complete.

West Northamptonshire Council is looking to provide a network of warm spaces to support anyone struggling with the cost of living this winter. We are keen to work with any community group or organisation that would be able to provide warm welcoming spaces within their community.

The information you provide below will be registered onto our Warm Spaces Directory, so please provide as much information as possible to let our residents know more about which facilities, activities and support they can expect when they visit your community space.

Thank you for your interest.

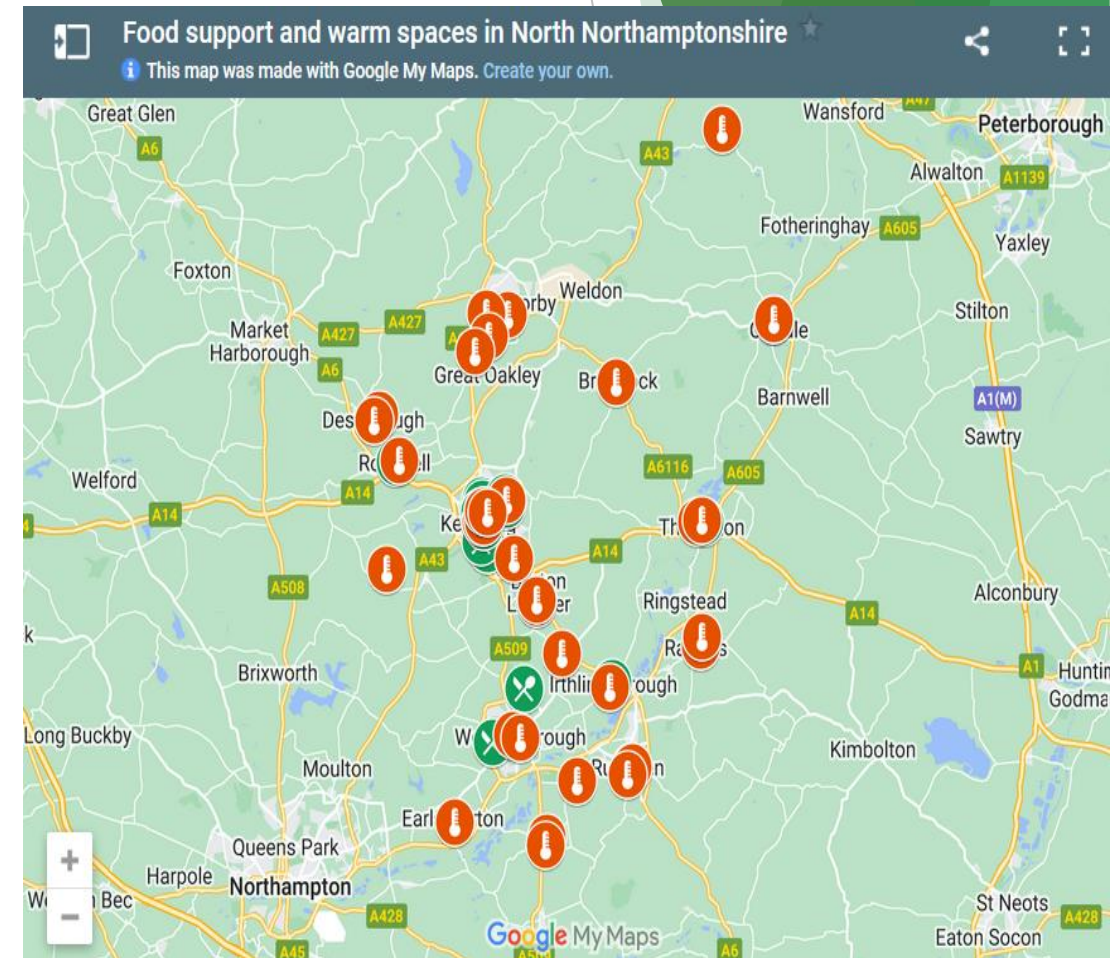
WNC Warm Welcoming Spaces grant

- ❑ A Warm Welcoming Spaces Grant scheme to support the creation and/or development of Warm Welcoming Spaces across West Northamptonshire
- ❑ To support residents struggling with fuel costs
- ❑ Awards can be made to Community, Voluntary Organisations and Registered Charities.
- ❑ The **minimum** amount of grant that can be applied for is **£500**.
- ❑ The **maximum** grant that can be applied for is **£1,500**.
- ❑ Application form and guidance notes available and completed application should be sent communitygrants@westnorthants.gov.uk with subject 'Warm Welcoming Spaces Grant Application Form'.



North Northants Council

- ❑ Has a cost-of-living page on website:
<https://www.northnorthants.gov.uk/cost-living>
- ❑ As with WNC has third tranche of Household Support Fund
- ❑ Also has a Warm Spaces map and places can register as a Warm Space
- ❑ A map showing food banks and places offering meals.
- ❑ Not currently offering any funding support



Other support options...energy

- ❑ Northamptonshire Energy Saving Service (NESS):
<https://www.northamptonshireenergysavingservice.org.uk/> delivered by Community Law Service in partnership with Citizens Advice Services Corby and Kettering, Care and Repair Northamptonshire, South Northants Volunteer Bureau, North Northamptonshire Council and West Northamptonshire Council.
- ❑ Provides free, independent information including:
 - ❖ Energy Tariff checking
 - ❖ Home Energy Assessment
 - ❖ Financial Health Checks
- ❖ Citizens Advice provides free, independent advice
- ❖ [Energy Saving Trust](#) advises how to make your home more energy efficient
- ❖ [Ofgem](#) – energy regulator for Britain
- ❖ Useful [utility support and advice page](#) on NNC website including info about schemes, grants and installers.



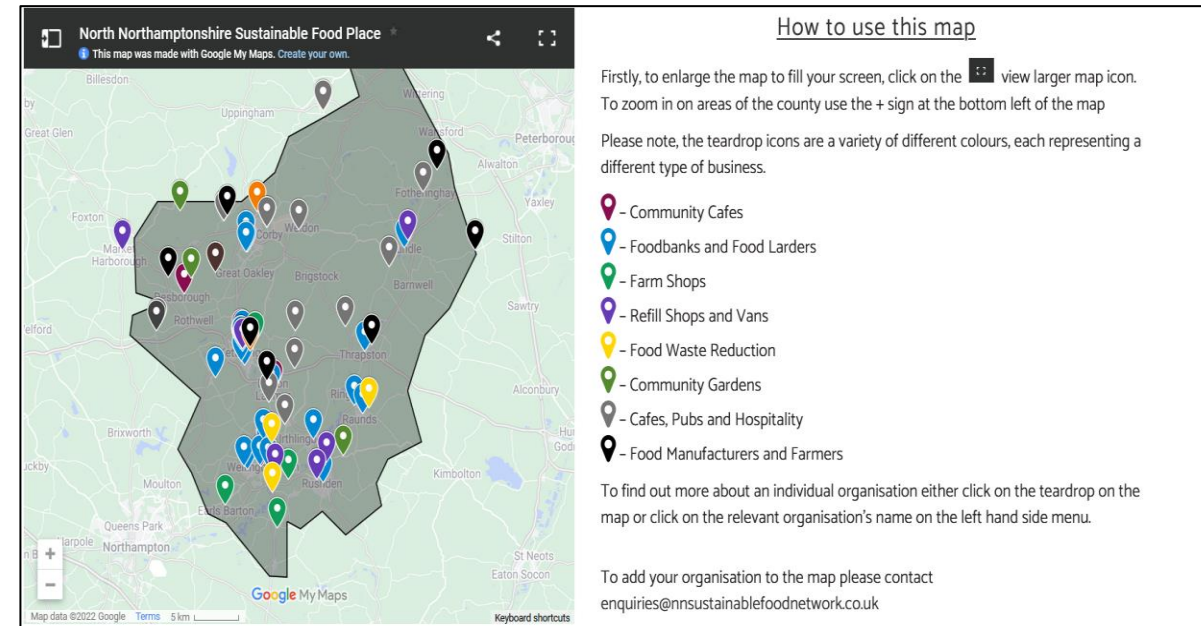
Other support options...food

- ❑ Food Aid Alliance West Northants (FAAWN) – network of 40 foodbanks and social supermarkets in West Northants
- ❑ Running a Street by Street food donation campaign
- ❑ FAAWN has a [directory of foodbanks](#) in west (currently being updated)
- ❑ West Northants Sustainable Food Place is active: <https://goodfoodwnorthants.org/sustainablefoodplace.html>
 - ❖ Exists to improve the sustainability, accessibility, quality and affordability of food in West Northants
 - ❖ Developing a new website



Other support options...food

- ❑ North Northants Sustainable Food Network:
<https://nnsustainablefoodnetwork.co.uk/>
- ❑ Has a map of foodbanks, larders, farm shops etc in North Northants
- ❑ Can register for a food waste app to have access to unwanted food
- ❑ Subscribe to our newsletter
- ❑ Join our Steering Group
- ❑ Download our Charter and sign up to our aims
- ❑ For more information contact:
enquiries@nnsustainablefoodnetwork.co.uk





Community Transport Directory

Jenni Hedges, Rural Office Northamptonshire ACRE

Community transport directory

- ❑ Updated for 2023
- ❑ Awaiting final information from schemes before release
- ❑ Number of schemes has decreased. Currently 22 in operation
- ❑ Schemes broken down into 6 categories:
 - ❖ Car schemes
 - ❖ Dial-a-ride
 - ❖ Community minibus
 - ❖ Group travel/hire
 - ❖ Shopmobility
 - ❖ Good Neighbour schemes
- ❑ List of villages in the county in alphabetical order with all the schemes that operate in their area
- ❑ Will be published in January 2023, request a copy.



NORTHAMPTONSHIRE COMMUNITY TRANSPORT

DIRECTORY 2023



Action for Happiness & Happiness Cafe

Jo Browning and Claire Yow

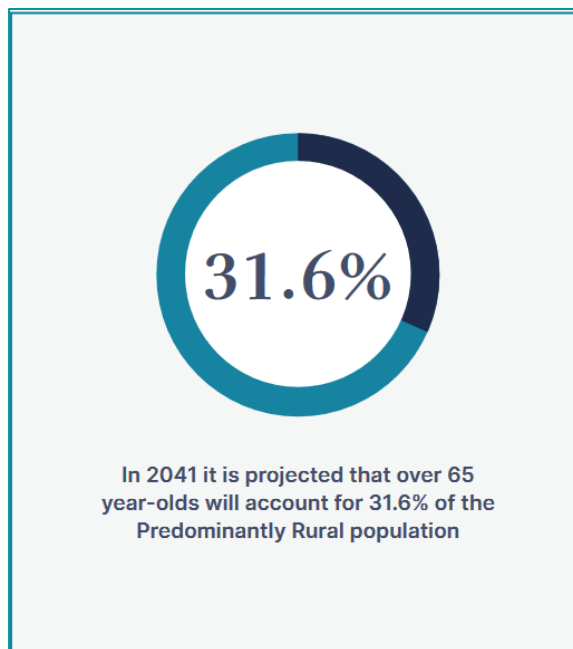


APPG Rural Health & Care Inquiry

Elaine O'Leary

9.7M
million people live in rural
areas of England

- Homes in rural areas are typically less energy efficient and are often more reliant on potentially more expensive heating fuels.
- Overall, the average fuel poverty gap for households that were fuel poor in 2019 was £216. However, the average fuel poverty gap for fuel poor households in Rural Villages, Hamlets and Isolated Dwellings was £585.



- People living in rural areas had on average two General Practices available within a 15 minute journey compared with eight General Practices in urban areas.

Transport and Travel

- In 2018/19 people living in the most rural areas travelled almost twice as far per year than those in the most urban areas.
- In 2018/19 in the most rural areas 87 per cent of travel was made using a car (as a driver or passenger) compared with 67 per cent in the most urban areas.

“

Almost one fifth of the population of England live in rural or coastal areas and they deserve better health and social care outcomes than is currently the case.

”

APPG Rural Health & Care Inquiry



- ❑ Set up prior to Covid, investigation undertaken by APPG and chaired by Anne Maire Morris MP to identify and ultimately address inequalities in rural health and care:

<https://www.ncrhc.org/news/appg-rural-health-and-care>

- ❖ It found the pandemic had major negative effects, resulting in damage to the wellbeing of health and care workers, staff shortages and the financial viability of care homes.
- ❖ The pandemic saw an increase in the number of people migrating to rural areas
- ❖ Inquiry highlights the need for Government to take notice of the impact on health services of the growing rural population.

- ❑ 12 recommendations grouped under 4 headings:

- ❖ Build understanding of the distinctive health and care needs of rural area
- ❖ Deliver services that are suited to the specific needs of rural places
- ❖ Develop a structural and regulatory framework that fosters adaption and innovation
- ❖ Develop integrated services that provide holistic, person-centred care

- ❑ Inquiry Overview at:

<https://rsnonline.org.uk/images/publications/RuralHealthandCareAPPGInquiryOve.pdf>

www.northantsacre.org.uk



acre@northantsacre.org.uk



01604 765888



<https://www.facebook.com/northantsacre/>



[@NorthantsACRE](https://twitter.com/NorthantsACRE)