

Northamptonshire ICN Place Development



Ali Gilbert – ICS Place Director for North Northants

Julie Curtis – ICS Place Director for West Northants

October 2022



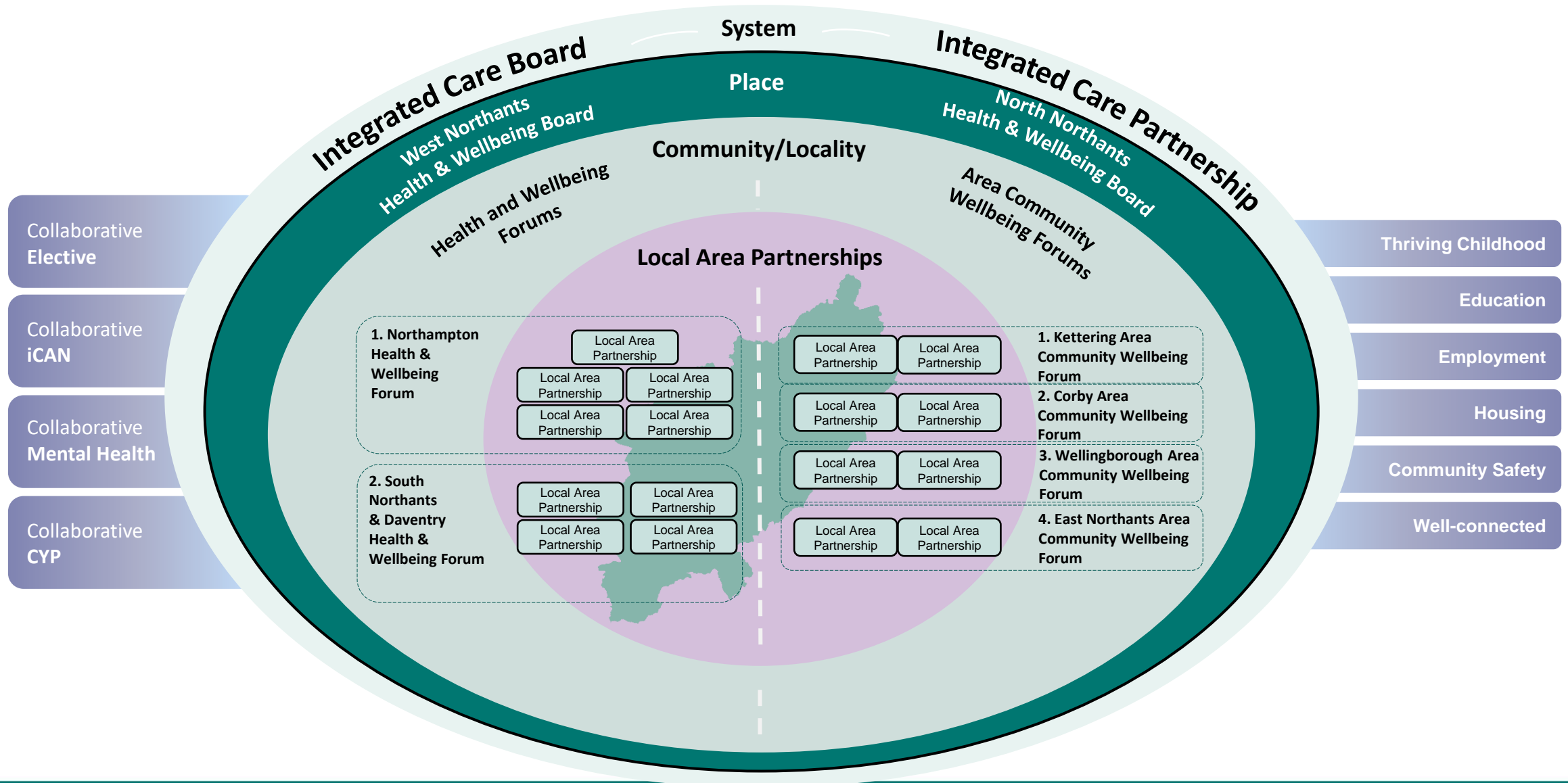
Vision and Ambitions

live your best life

We want children, young people and adults to have every opportunity to live their best life. Living your best life, for us means people have equity of opportunity to be the best version of themselves. To be the best version of themselves we recognise that people need;

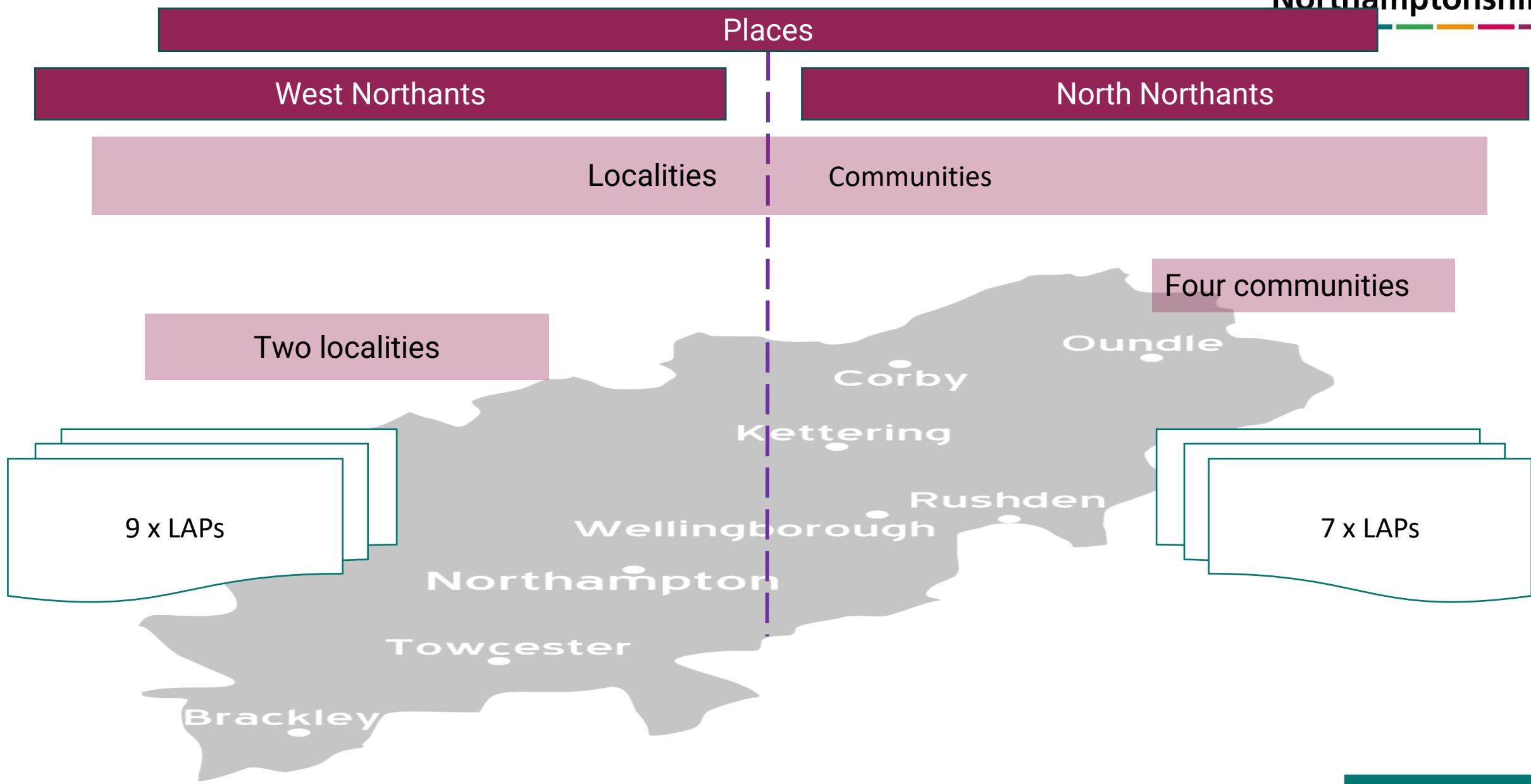
- Best Start in Life
- Access to the best available education and learning
- Opportunity to be fit, well and independent
- Employment that keeps them and their families out of poverty
- Housing that is affordable, safe and sustainable in places which are clean and green
- To feel safe in their homes and when out and about
- Connected to their families and friends
- The chance for a fresh start, when things go wrong
- Access to health and social care when they need it
- To be accepted and valued simply for who they are

To support our residents with these 10 domains means that we have to collaborate, not just with our partners and local business but also with local people to ensure we understand the uniqueness of each of our Local Area Partnerships and the people who live in them. Understanding this uniqueness enables us to ensure the right support, environment and interventions are in place to support people to live their best life



Northamptonshire's Approach to Place Development

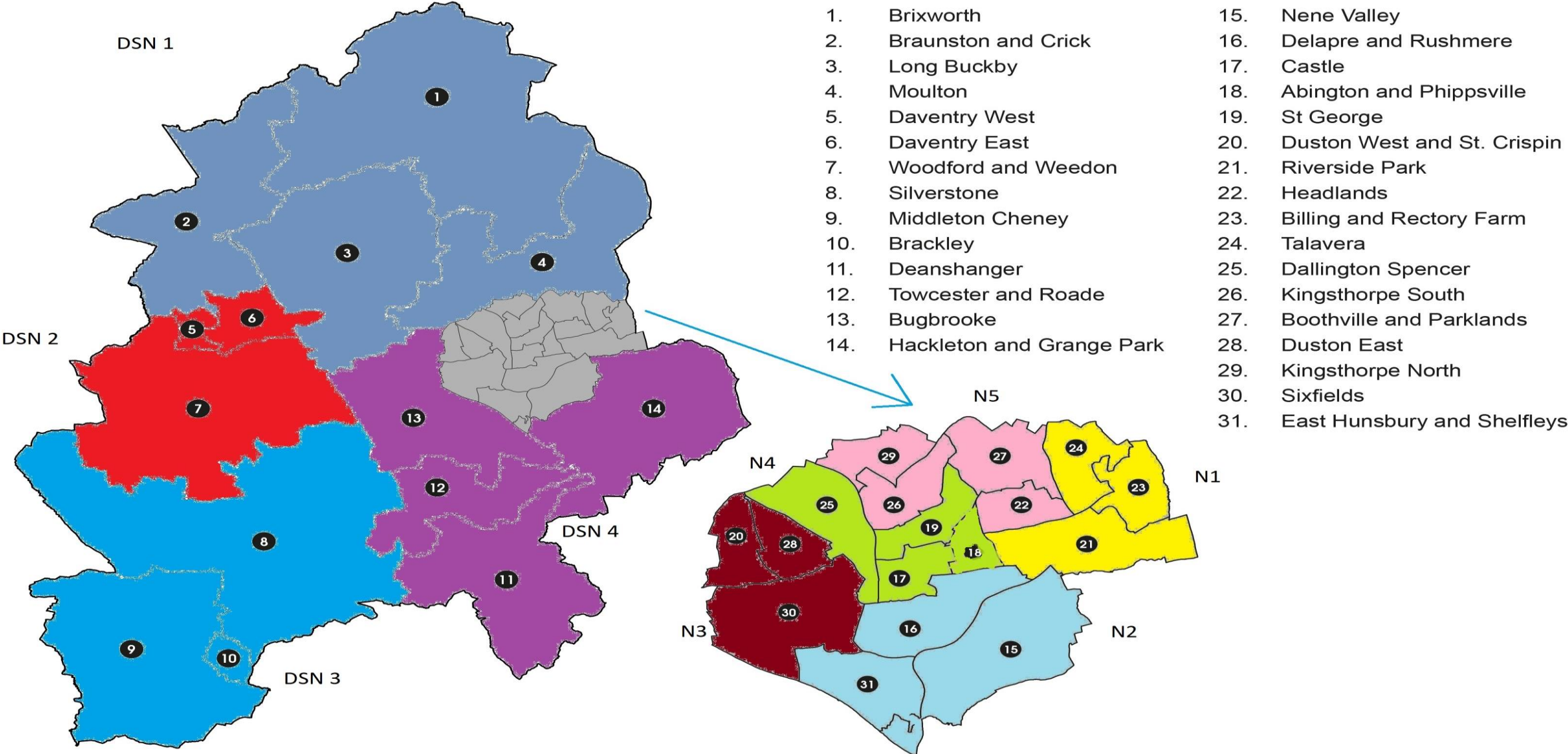
Integrated Care
Northamptonshire



Local Area Partnerships

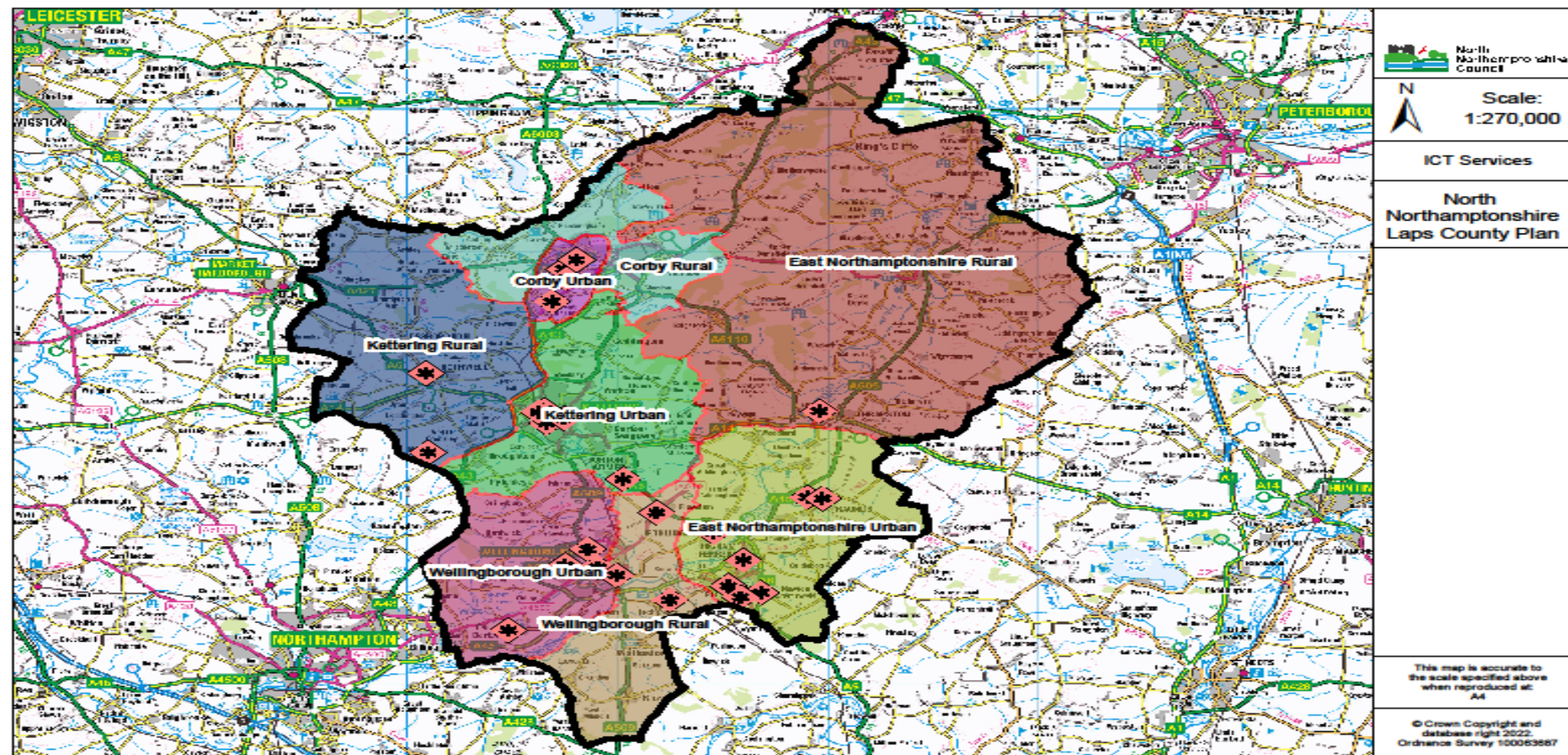
Integrated Care
Northamptonshire

West Northamptonshire Unitary | Electoral Wards



North Place LAP boundaries

Integrated Care
Northamptonshire



Local Area Partnership – LAPS - live discussion

- ❑ We need to get the LAP **function** right

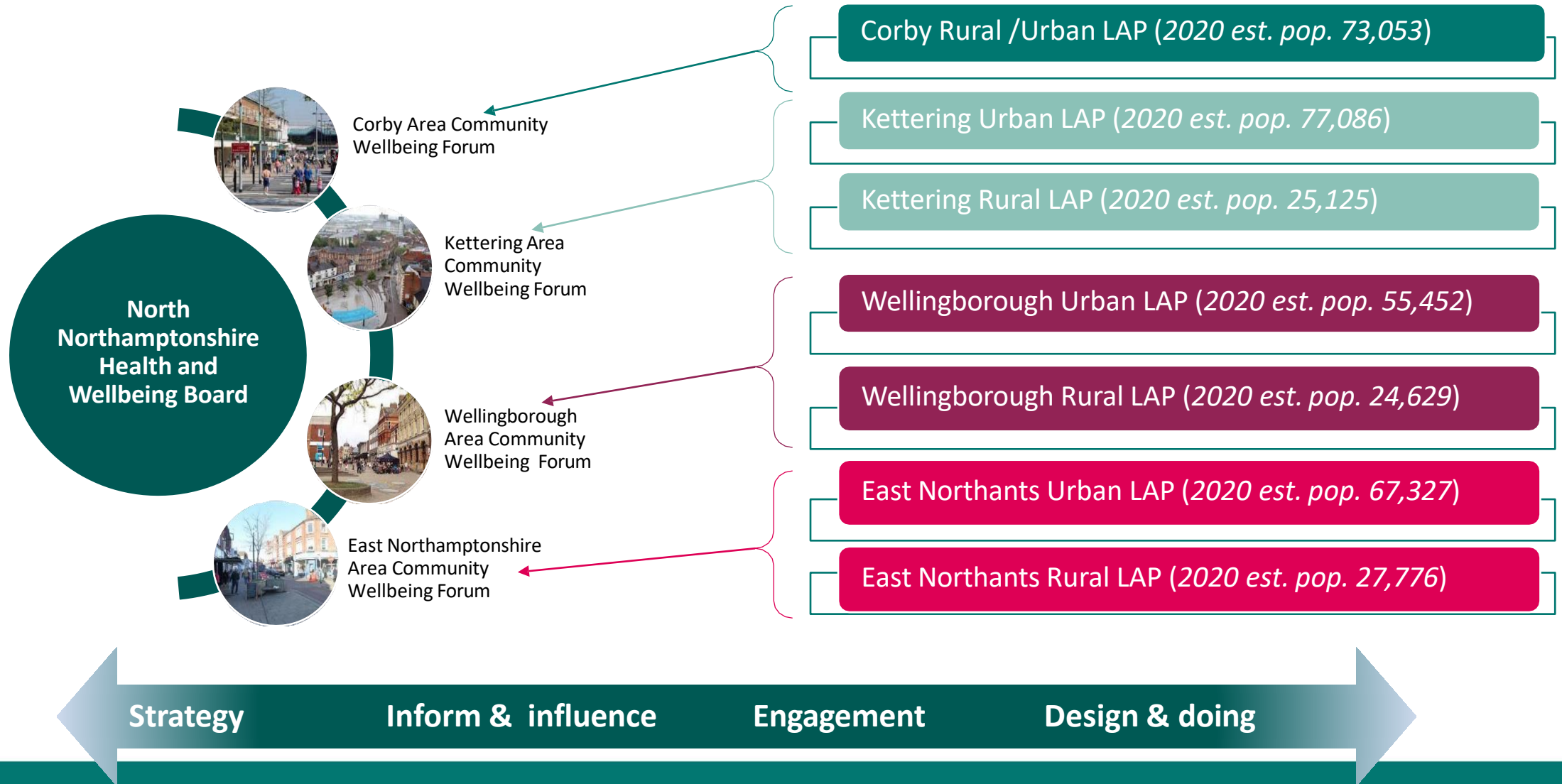
- ❑ **WHICH SERVICES** – health and care services and wider determinates of health services work together at a local level to focus on the needs of the community

- ❑ **HOW** - based on community footprints , community support with local leads

- ❑ **INTELLIGENCE LED** priorities identified around the needs of communities

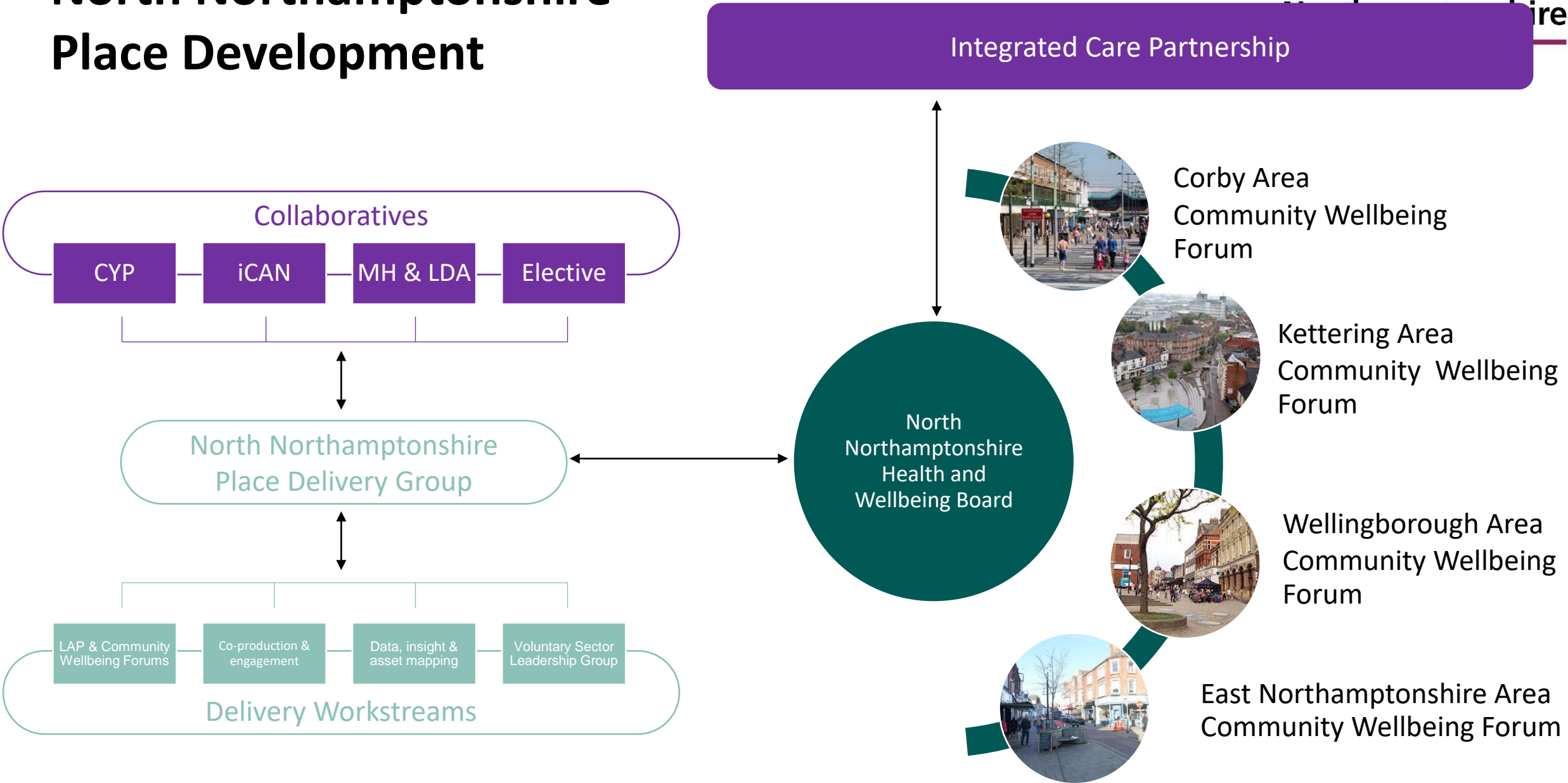
Area Community Wellbeing Forums Local Area Partnerships

Integrated Care
Northamptonshire



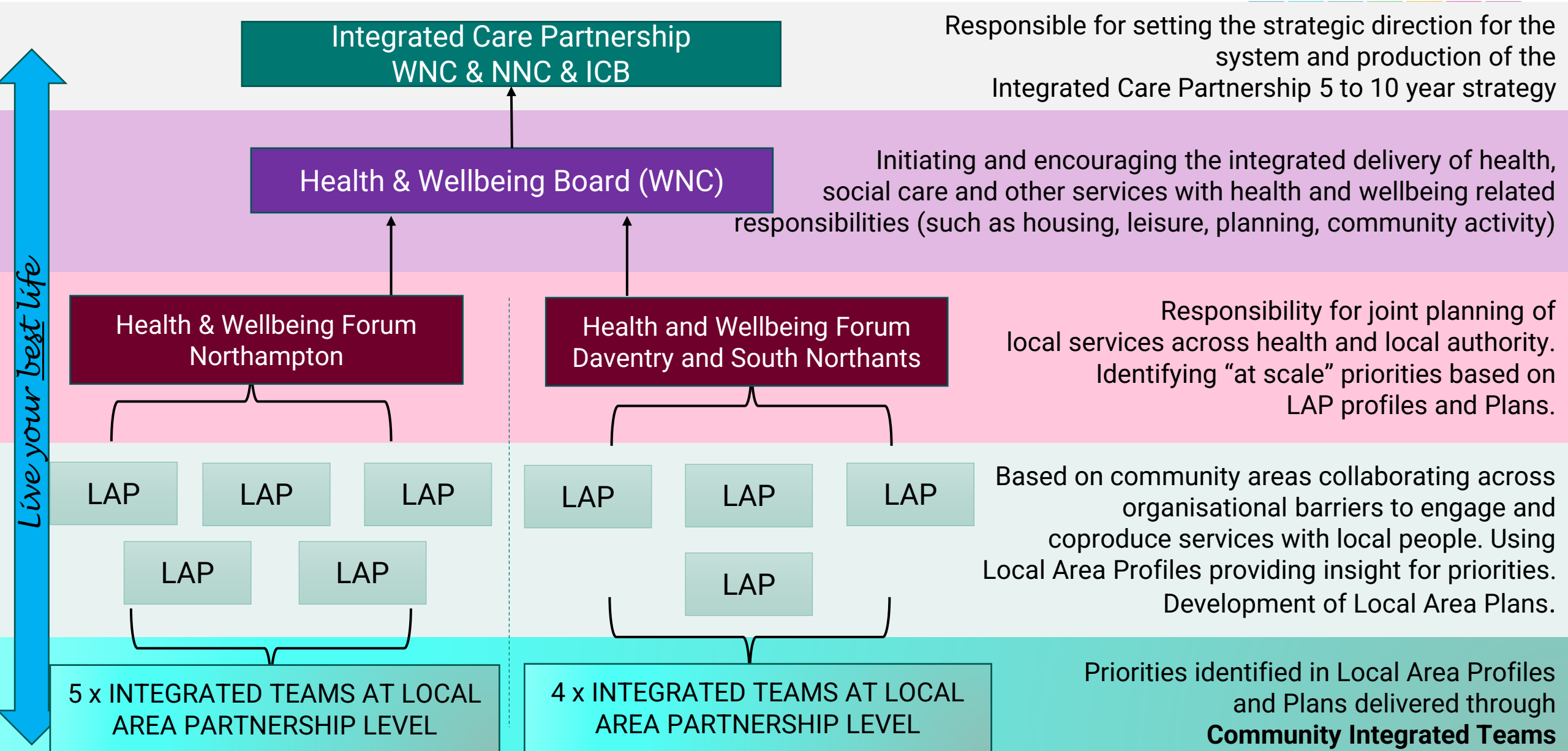
North Northamptonshire Place Development

Integrated Care Partnership



WNC Place Operating Model

Integrated Care Northamptonshire



Formal Governance Arrangements

**INTEGRATED CARE
PARTNERSHIP**



South Northants
and Daventry
Health and
Wellbeing Forum

Local Area
Partnership

Local Area
Partnership

Local Area
Partnership

Local Area
Partnership

Northampton
Health and
Wellbeing Forum

Local Area
Partnership

Local Area
Partnership

Local Area
Partnership

Local Area
Partnership

Local Area
Partnership

Operational Management and Oversight for delivery
of Place at all levels

WNC Executive Place Delivery Board

WNC Place Delivery Group

LAP
Development

VCSE
Development

WNC Internal
Service
Development
(formerly LYBL Board)

Locality
Development

Live discussion - we need to get the function right

- ❑ LAPS must push the wider determinants of health and inequality agenda
- ❑ Local community **design and doing** through **improved understanding of communities**
- ❑ **Membership** not to be too prescriptive and relevant to local pertinent issues
- ❑ Recognising **not getting things right first time**
- ❑ **Letting go** of governance culture
- ❑ **Flexible and adaptable** learning and sharing approach
- ❑ **Community voice**, engagement and activation at the heart

- ❑ **Asset based community development** with needs met but the community involvement, ownership and not just commissioning of services;
 - drive, skill and **expertise** of residents
 - **Involvement** of local groups and networks
 - Local **environment** use eg spaces
 - Local collective **estate** inc. sporting and worshipping venues
 - Local **charities** involvement
-

Development of LAPs – story so far

- **Objective:** Health services, care services and wider determinates of health services integrated at a local level to focus on the needs of the community.
- 2 Pioneer sites identified to accelerate and test out how the LAP model might practically work.
- LAP N4 in Northampton, LAP DSN4 in Daventry & South Northants
- GPs/PCNs mapped to LAPs.
- ASC on a LAP footprint.
- Council services adopting LAP approach where sensible.
- VCSE engaged and will provide support to LAPs on a thematic basis.
- Police “beats” arranging themselves into LAPs.
- Links to iCAN welfare support teams to enhance access to services.
- Local Area Profile data to inform LAP priority setting.
- Asset mapping of LAPs.
- Asset based community engagement and coproduction.
- Links to WNC Anti-poverty Strategy Action Plan.



DSN4

Bugbrooke
Towcester and Roade
Deanshanger
Hackleton and Grange Park

N4

Dallington Spencer
Castle
Abington and Phippsville
St George
Kings Heath

Integrated Care Northamptonshire

Live your best life

Live your best life

