

Place Development 2023



Ali Gilbert & Julie Curtis

ICS Place Directors North and West





Integrated Care Northamptonshire Strategy

live your best life

Shared vision, aims and ambitions

Shared vision

We want to work better together in Northamptonshire to create a place where people and their loved ones are active, confident and take personal responsibility to enjoy good health and wellbeing, reaching out to quality integrated support and services if and when they need help.

Shared aims

- Improve the health and wellbeing of the population
- Reduce inequalities in health and wellbeing outcomes
- Ensure value for money
- Contribute to the economic and social wellbeing of Northamptonshire.

Shared ambitions

We want the people of Northamptonshire to have:

- The best start in life
- Access to the best available education and learning
- Opportunity to be fit, well and independent
- Employment that keeps them and their families out of poverty
- Good housing in places which are clean and green
- Safety in their homes and when out and about
- Feel connected to their families and friends
- The chance for a fresh start when things go wrong
- Access to health and social care when they need it
- To be accepted and valued simply for who they are.



Northampton General Practices

Northamptonshire Integrated Care System

Integrated Care Northamptonshire

Improve the health and well-being of the population

Reduce inequalities in health and wellbeing outcomes

Access to health & social care when needed

Opportunity to be fit & well

Best start in life

Access to the best available education & learning

Employment that keeps them & their family out of poverty

Contribute to the economic and social wellbeing of Northamptonshire

Ensure value for money

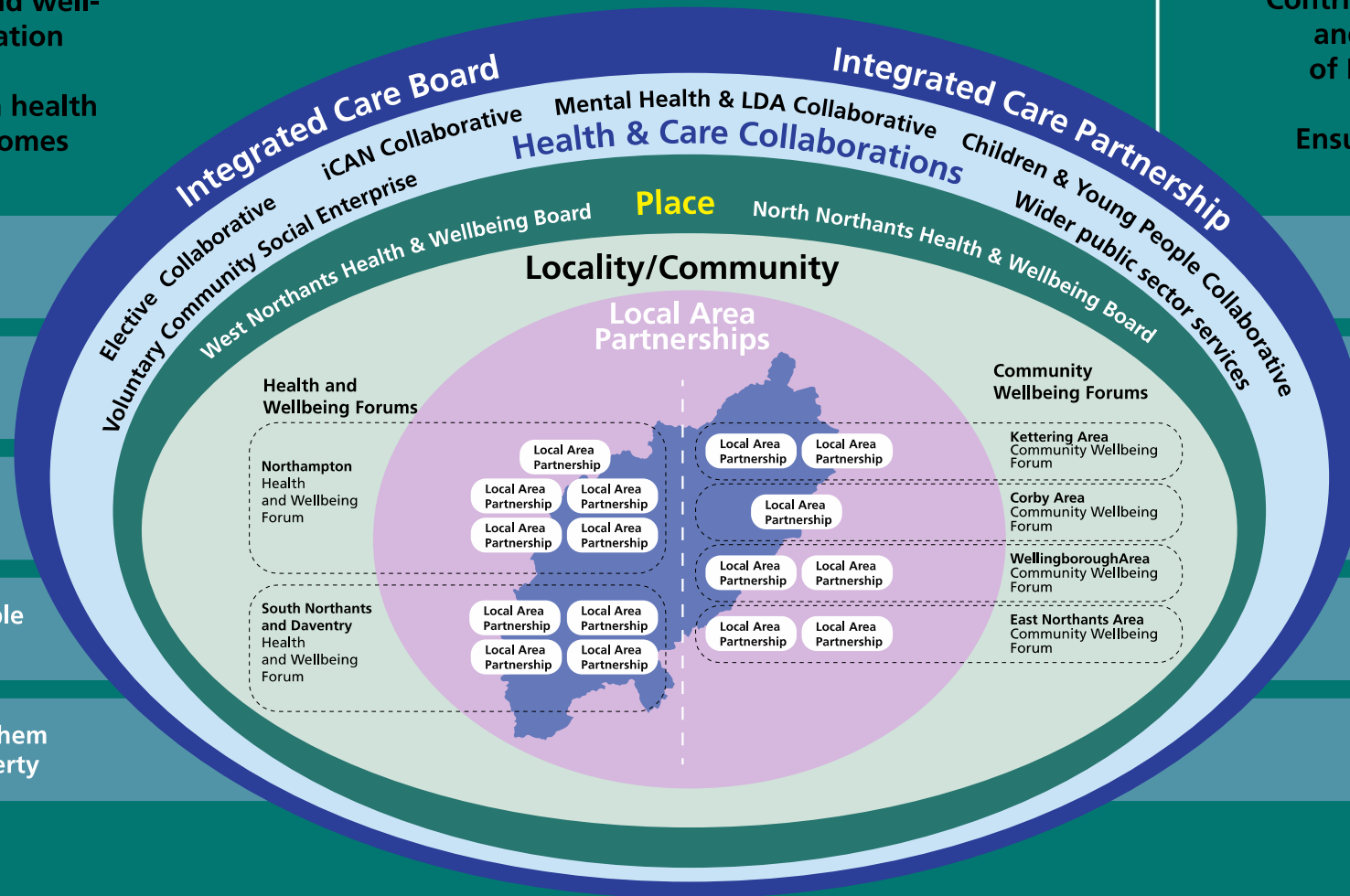
Good housing in places which are clean and green

To feel safe in their homes & when out and about

Connected to their families

To be accepted & valued simply for who they are

Access to health & social care when needed



Places

West Northants

North Northants

Localities

Communities

Two localities

Four communities



9 x
LAPs

7 x
LAPs

North Place Development Phase Two 2023

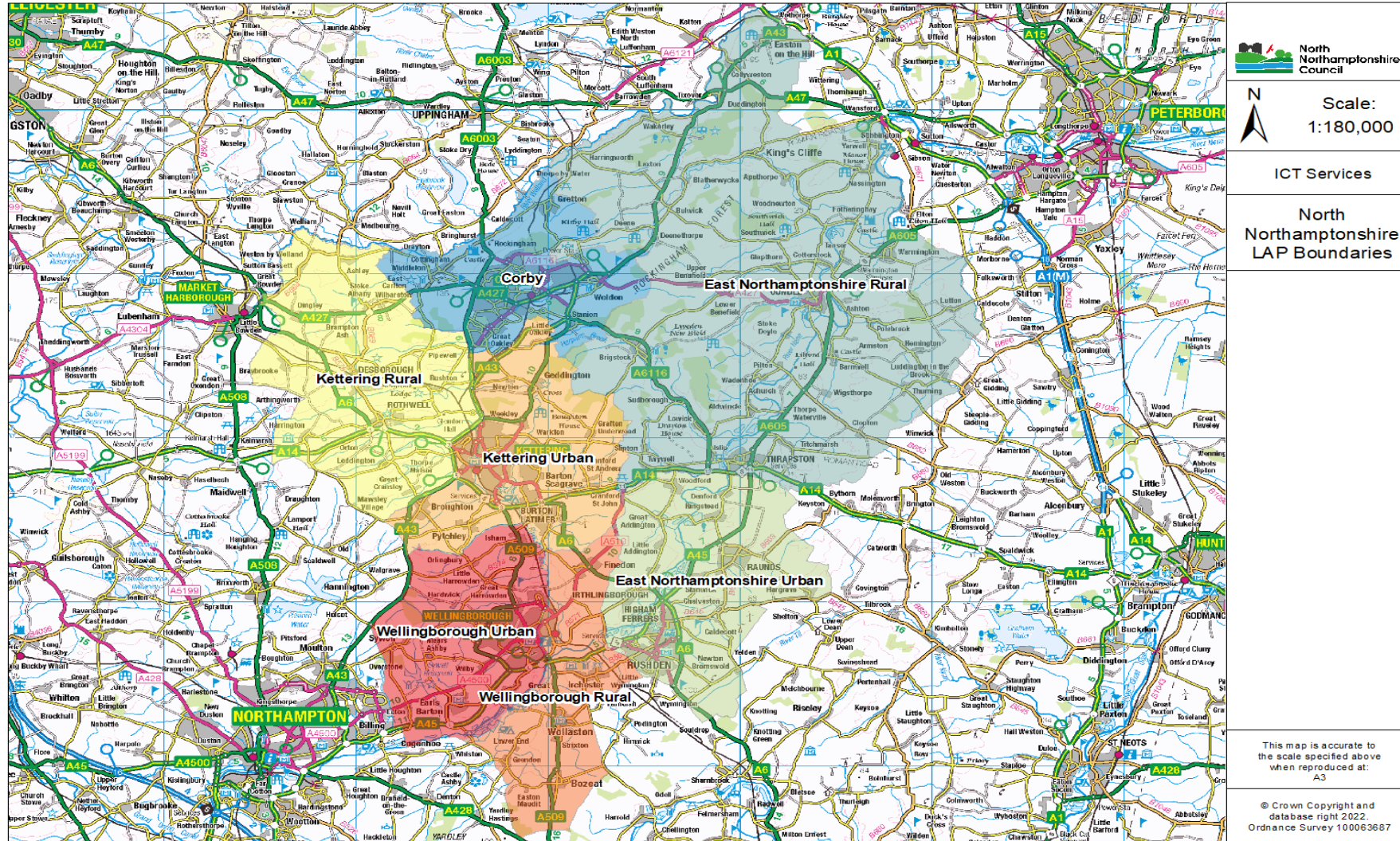


Ali Gilbert

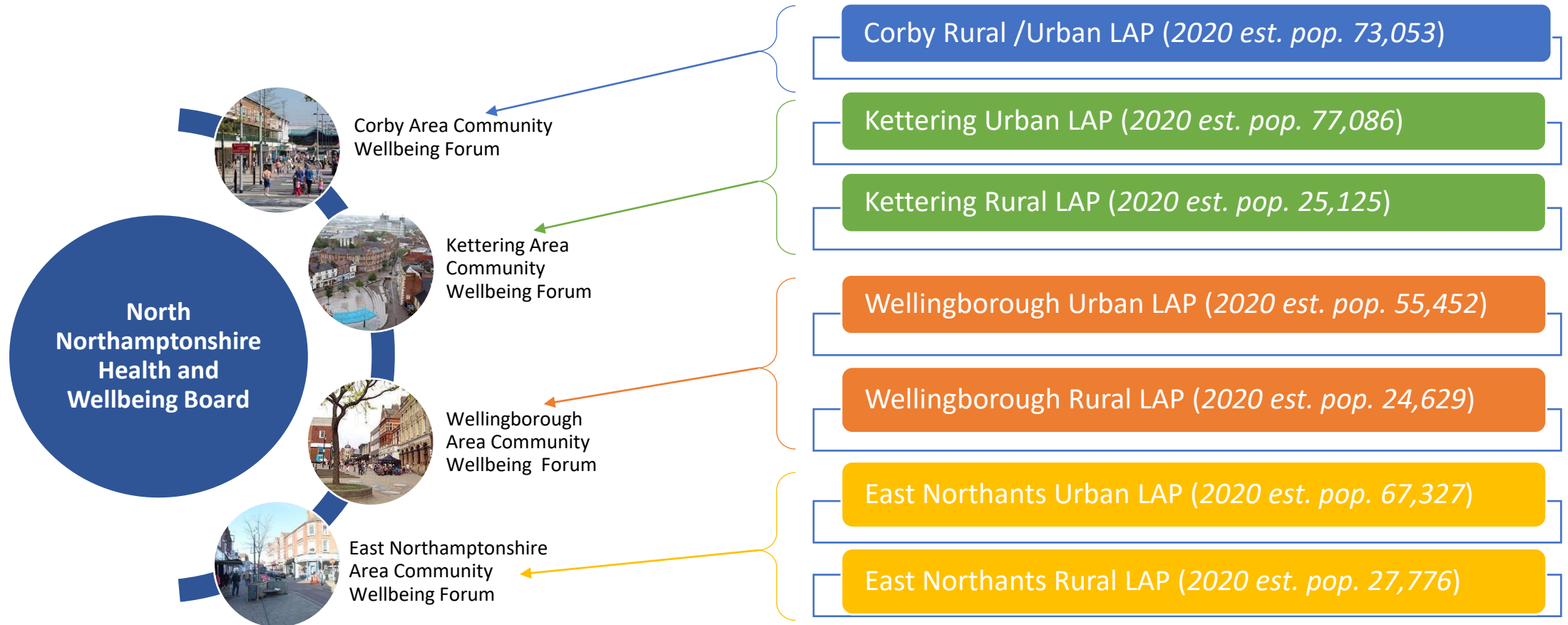
ICS Place Director North



North Place LAP boundaries



Area Community Wellbeing Forums Local Area Partnerships



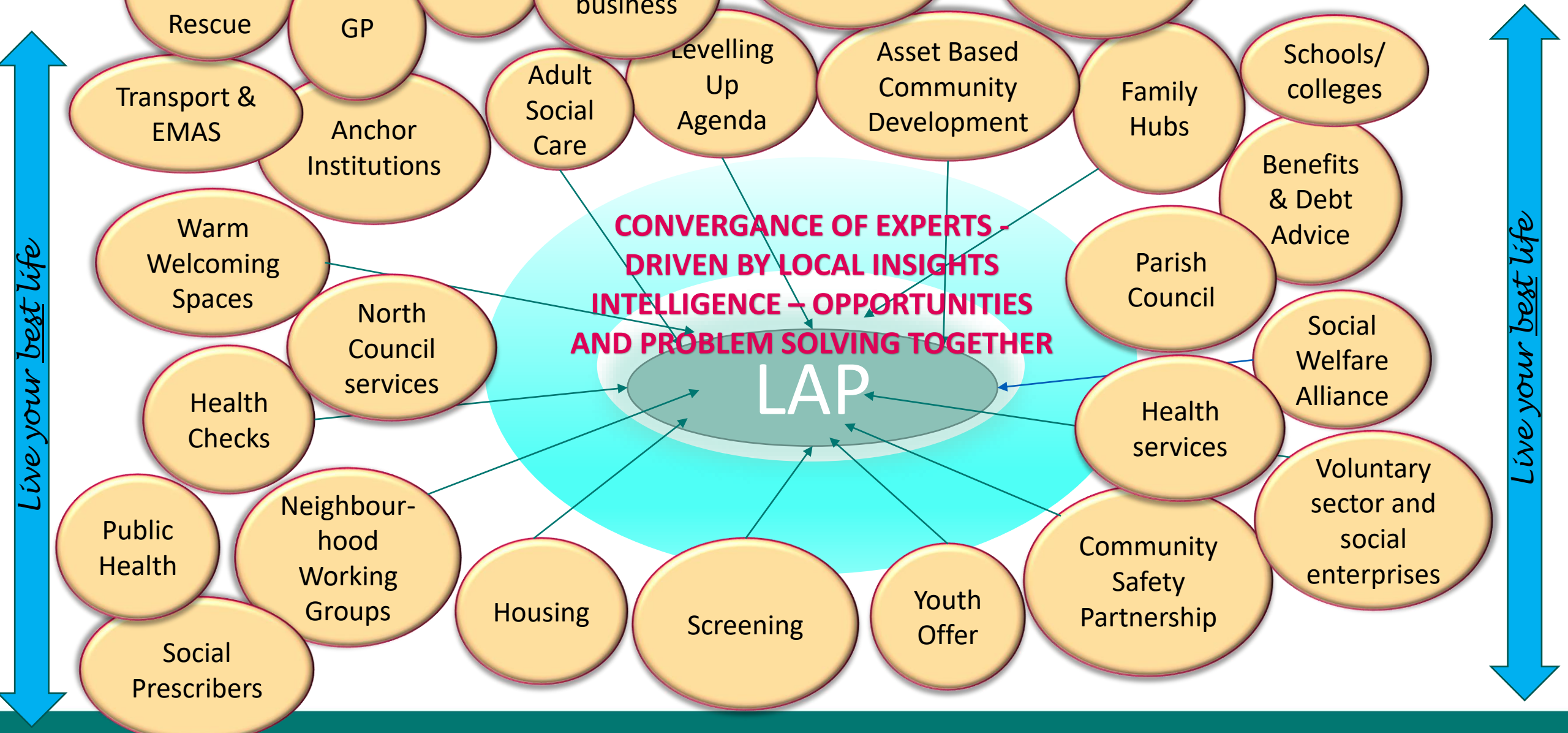
Community Wellbeing Forum January Events

Area	Date	Time	Venue
Corby	25 th January	1.30pm – 3.30pm	Kingswood Community Centre, Corby
East Northants	23 rd January	10.00am – 12.00pm	Plaza Community Centre, Thrapston
Kettering	26 th January	12.30pm – 2.30pm	Barton Seagrave Village Hall, Kettering
Wellingborough	27 th January	10.00am – 12.00 pm	Victoria Centre, Wellingborough

Local Area Partnership January Events

Area	Date	Time	Venue
Corby	Wednesday 18 th January	2.00pm – 4.00pm	Danesholme Community Centre, Corby, NN18 9EJ
East Northants Rural	Friday 20 th January	2.00pm – 4.00pm	Glaphorn Room, Fletton Hall, Glaphorn Road, Oundle, PE8 4JA
East Northants Urban	Monday 16 th January	2.00 pm – 4.00 pm	Saxon Hall, Raunds, NN9 6LT
Kettering Rural	Monday 30 th January	2.00pm – 4.00pm	Desborough Library Community Hub, NN14 2QS
Kettering Urban	2 nd February	1.00 pm – 3.00 pm	Crescent Community Centre, Kettering, NN16 9PH
Wellingborough Rural	Tuesday 24 th January	2.00 pm – 4.00 pm	Grendon Village Hall, Main Road, Grendon, NN7 1JW
Wellingborough Urban	Wednesday 1 st February	1.00 pm – 3.00 pm	Victoria Centre, Palk Road, Wellingborough, NN8 1HR

**Integrated Care
Northamptonshire**



Next Steps

- ❑ CWF permanent chair / deputy chair elections close 27th January
- ❑ CWF chairs to sit on NHWB 21st March 2023
- ❑ CWF community engagement stock take completion by next CWF meetings to move into collective reset of the current approach
- ❑ NNC elected members on-line engagement event planned February 2023 TBC
- ❑ Central repository for access to information – NHWB website
- ❑ Strengthen connection with education partners/local businesses
- ❑ Service and asset mapping to overlay the emerging LAP Theme

Matrix

West Place Development 2023



Julie Curtis

ICS Place Director West Northants



West Health & Wellbeing Forums x 2



Daventry & South Northants
Northampton Town

Local Partners

- Shared aims, ambitions and opportunities
- Prevention

LAPs

- Bring together LAP learning
- Support and unblock

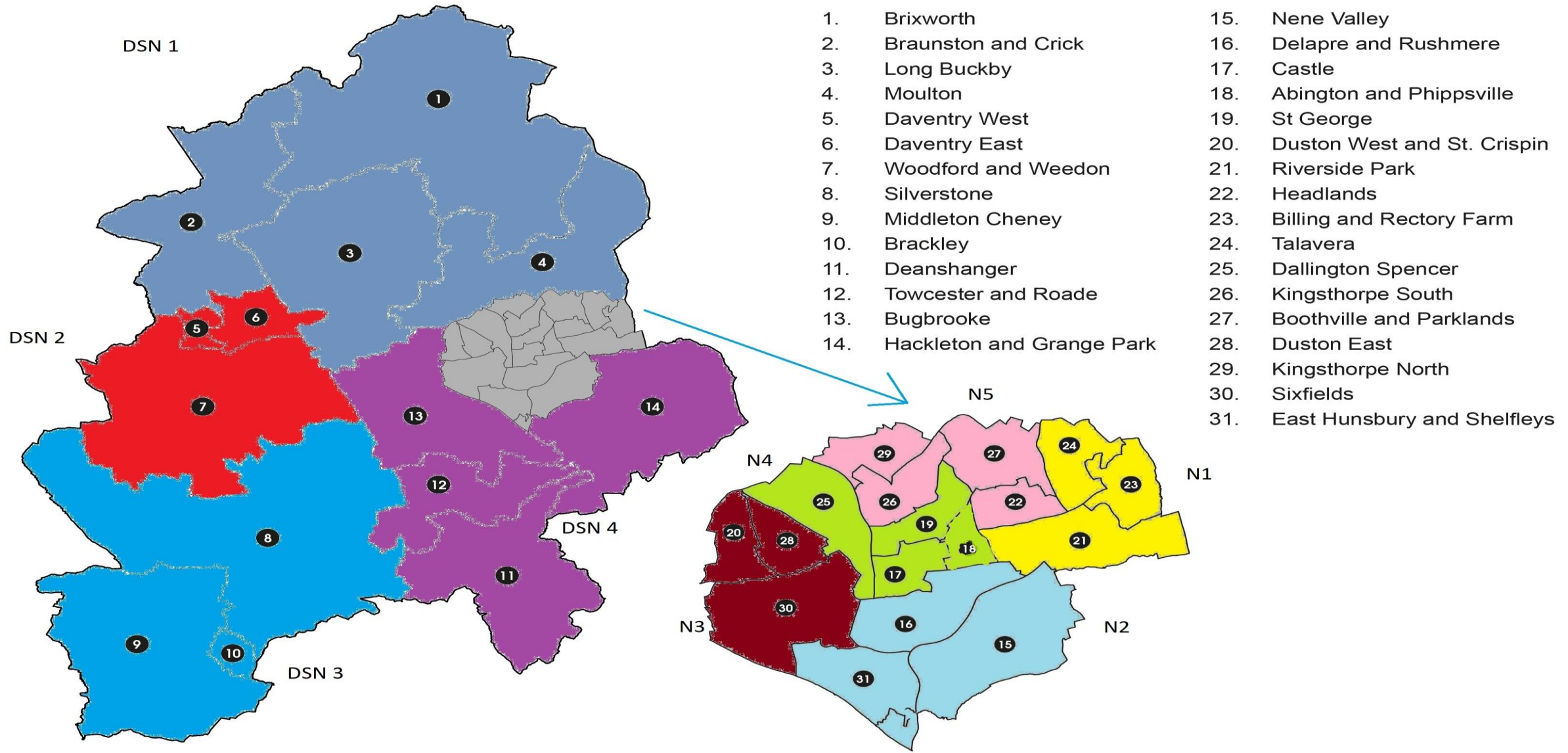
Insights

- Agree priorities
- Agree, local, multi-partner action plan

Local Area Partnerships

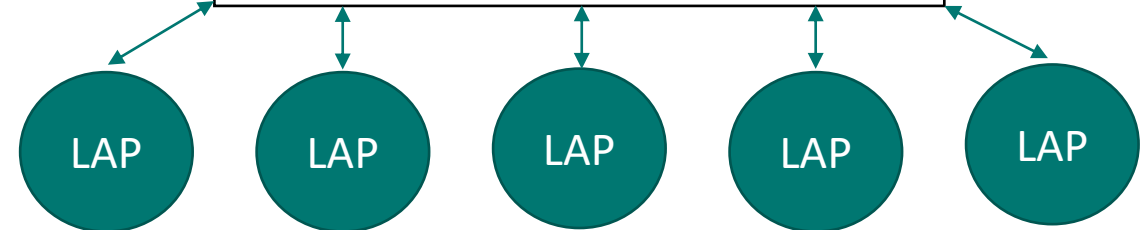
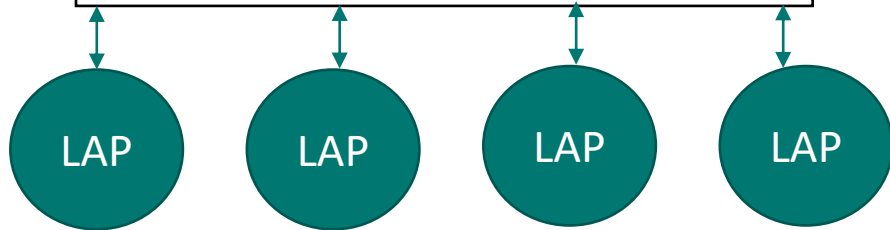
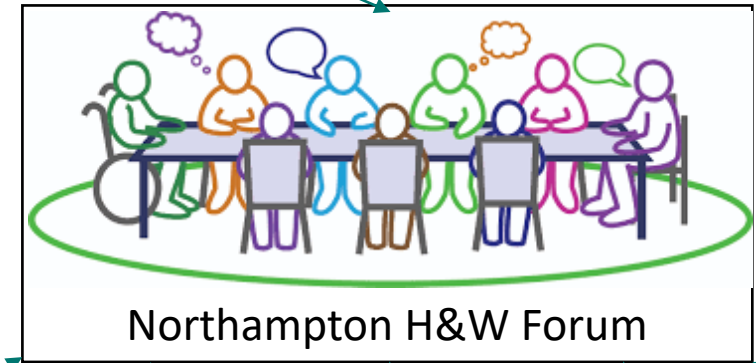
Integrated Care
Northamptonshire

West Northamptonshire Unitary | Electoral Wards

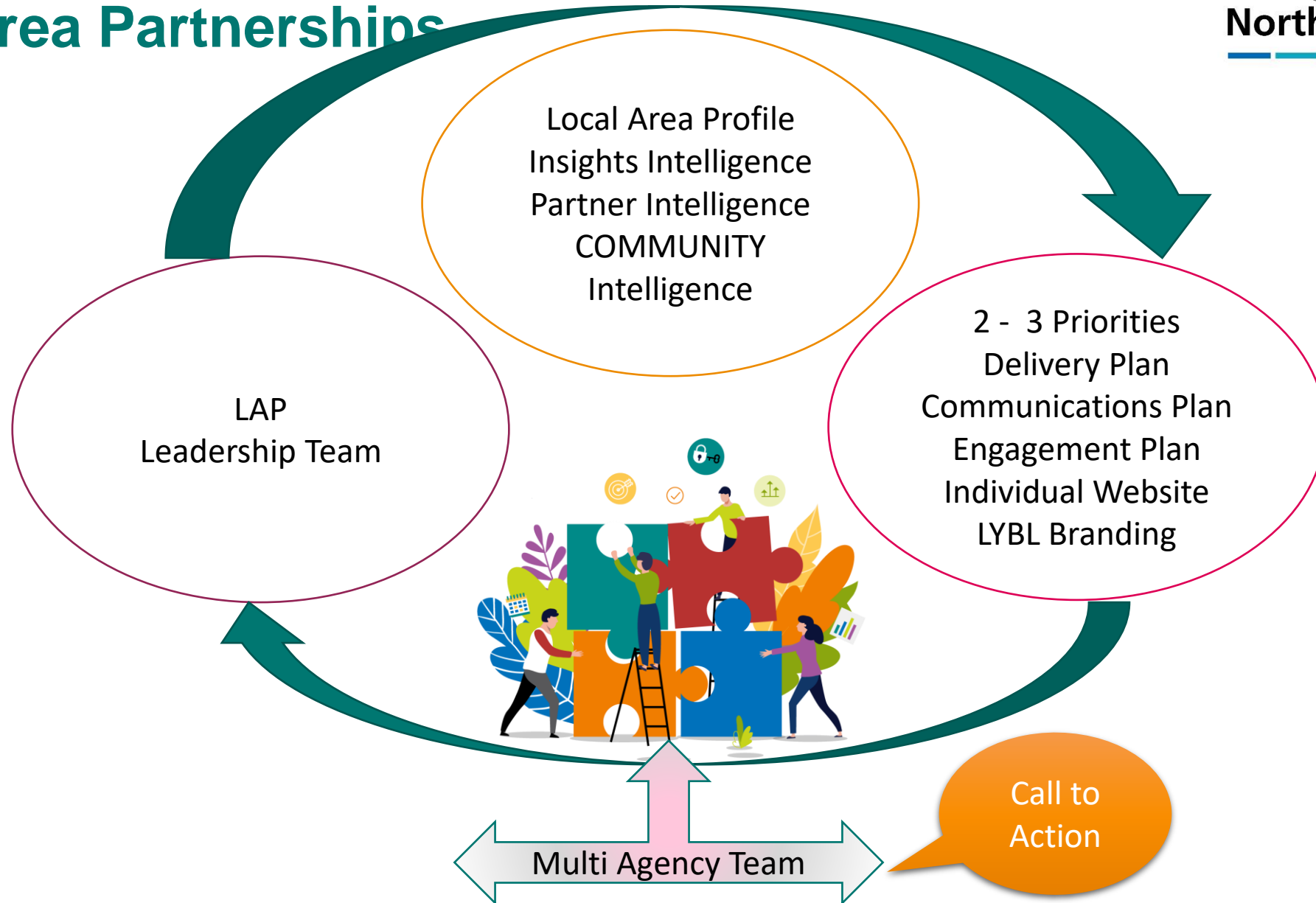


How Forums & LAPs link together

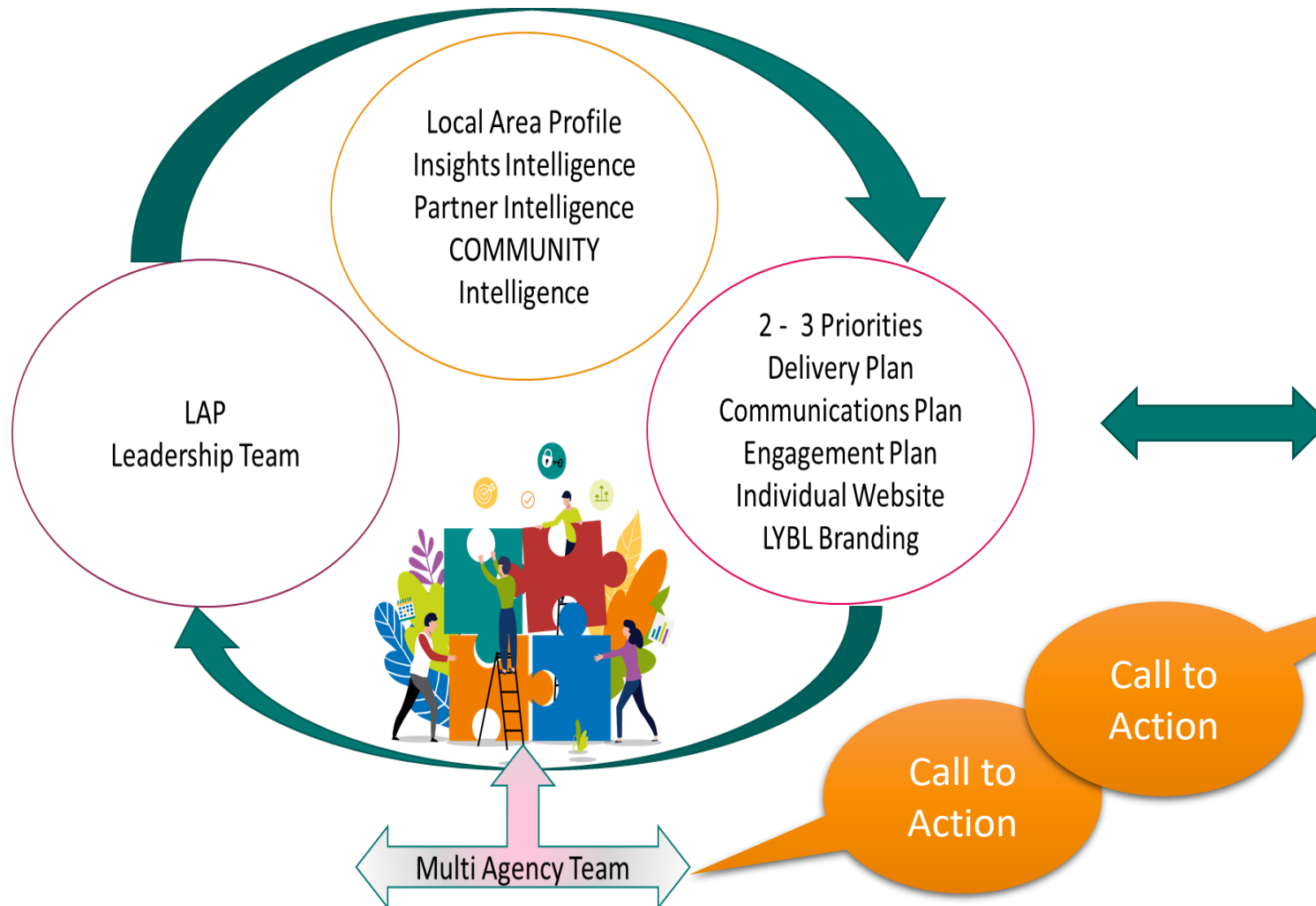
West Northants
Health &
Wellbeing Board



What does this mean: Local Area Partnerships



What does this mean: Health & Wellbeing Forums



- LYBL Strategy
- Support LAP development and delivery
- Share learning across LAPs
- Unblocks challenges
- Produce Multi Partner Action Plan
- Provide support to Multi Agency Teams



Live Example N4

Introduction Page 3 for an introduction to this report

 <p>Population</p>	<p>There are 57,033 people living in N4</p> <p>See pages 4-9 for more information on population by age and gender, ethnicity, country of birth, language, migration, household composition and religious beliefs.</p>	 <p>22% of children aged 0-19 are in relative low-income families in N4 compared with 19% across England</p>
 <p>Economy</p>	<p>45% people aged 16-74 are in full-time employment in N4 compared with 39% across England</p> <p>See pages 49-55 for more information on people's jobs, job opportunities, income and local businesses</p>	
 <p>Access &</p>	<p>3% of households lack central heating in N4 compared with 3% across England</p> <p>See pages 56-58 for more information on transport, distances services and digital services</p>	
 <p>Crime & safety</p>	<p>The overall crime rate is higher than the average across England: IMD = Crime N4 70.5% vs England Ave 20.4%</p> <p>See pages 34-35 for more information on recorded crime and crime rates</p>	
 <p>Health & wellbeing</p>	<p>16% of people have a limiting long-term illness in N4 compared with 18% across England</p> <p>See pages 36-45 for more information on limited long-term illness, life expectancy and mortality, general health and healthy lifestyles</p>	<p>Appendix A</p> <p>Page 67 for information on the geographies used in this report, publication dates for new indicators and acknowledgements.</p>

Northampton N4 LAP 18-24 Demand (by occurrence location)



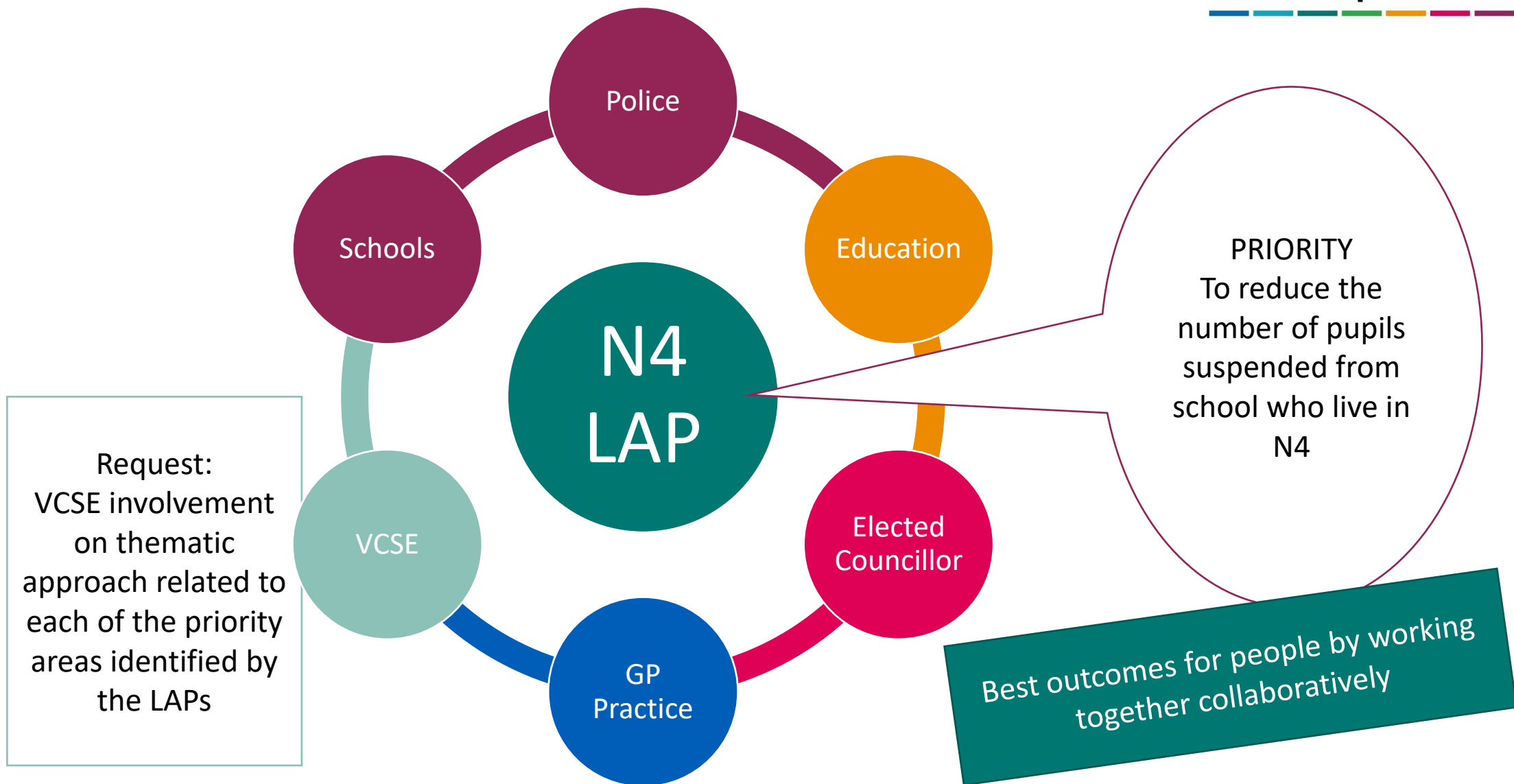
50% of all crime committed in Northampton Town is committed by those living in N4

Exclusion data - Census term 1-6 - School year 2021-2022

LAP	Number of Pupils on Roll (Oct 21)	Suspension Events	Number of Days Suspended	Suspension Pupils	Proportion of Pupils Suspended	Number of Permanent Exclusions
DSN1	6,450	223	488	118	1.8%	
D	4,967	105	194	47	0.9%	1
		135	248	70	1.4%	3
			538	158	2.0%	2
N 1			408	302	3.6%	8
N 2	6,561			170	2.6%	2
N 3	7,127				3.8%	8
N 4	8,961	1,151	2,171	627	7.0%	6
N 5	8,438	752	1,422			
Total	63,963	4,571	8,936	1,868	2.9%	34

Collectively the pupils suspended and excluded in one year lose 12.5 years of education

Multi Agency Team arranged



Next Steps

- 2 LAP Pioneer sites launched October 22:
 - Leadership team established; monthly meetings; agreed actions
 - Local Area Profile, Police, EMAS and Education data available to inform intelligence led decision making on 2 – 3 priorities
- Need to roll out to other 7 LAPs across West Northamptonshire. This will require focus, ownership and build on the successful momentum created through our Pioneer sites
- Achieved through current partnership working arrangements:
 - Multi agency local Health & Wellbeing Forums
 - Multi agency stakeholder Executive Place Delivery Board
 - Weekly Place Operations Group
- Identify the Core Products required for each LAP
- Develop comprehensive implementation plan and timeline for delivery of 9 LAPs by June 2023

Roll out plan: LAP Core Products

- Strategic leadership agreed
- Insights profile
- 2 – 3 priorities
- Project Management resource
- Operational Multi-agency Teams
- Local Delivery Plan
- Local Communications Plan
 - LYBL Branding
 - Website – Plan on a Page
- Local Engagement Plan
 - Asset based
 - Community led
- Metrics to contribute to our LYBL ambitions
- Governance arrangements



Create
timeline
for
delivery
of core
products

Thank you and
any Questions

